

Black Box Technical Specs

RATES:

Black Box rental rates range from \$2,000-\$4,000 for the week, Monday through Sunday. Rates vary based on season, availability, non-profit status, and mission fit. Daily rentals can sometimes be arranged under special circumstances such as dark nights. Friday or Saturday daily rentals are extremely rare but are possible if the requested date is within 6 weeks of inquiry and the space is available.

SPACE:

Space is 26' 6" X 33' 3", which includes stage and seating area. Seating takes approximately half of the space.

Floating Grid Height is 19'0"

Seating consists of 3' x 8' platforms that can be legged at any height. Seats up to 90

SOUND:

Sound Console:

- 1 12 channel Mackie DFX 12 board
- 1 Altec/Lansing dual channel power amp.
- 1 DOD rack mount power supply w/mini lamps
- 2 Hanging main full-range speakers

Sound Float Inventory:

This inventory is shared with both the Main Stage and the Black Box and is available on a first come first serve basis. If you need to reserve instruments from this inventory for your sound design please let us know.

Mics:

2 SM 57

1 SM 58

Cables:

2 25' XLR cable

2 25' ¼" cable

Mic Stands:

2 straight mic stands

2 boom mic stands

2 straight table stands

LIGHTING:

Lighting inventory is constantly changing and availability is subject to approval. Contact the Technical Director for a current inventory. The Technical Director must approve all light plots and instrumentation. Lamps in the instruments expire from time to time. 7 Stages keeps a running inventory for the instruments in stock. If a lamp should expire, notify the Technical Director of the type needed and they will make available a replacement lamp.

All instruments must be hung from the existing grid and/or light trees. All hanging instruments must use a safety cable. Any floor-mounted instruments must have the cable taped to the floor with gaffer's tape or covered with carpet.

Gel is not provided by 7 Stages, it is the responsibility of the renter to provide gel and other expendables such as gaffer's tape, glow tape and gobos.

Lighting Console:

ETC Express 24/48 Console

Circuits – 40 Stage Pin

40 NSI 1.2K digital dimmers - (1 to 1 patch)

Lighting Instruments:

6 Source 4 36 degree

11 Altman 6X9

2 Altman 6X12

11 6" Fresnel – 500W

10 Colortran Mini Zooms – 500W

8 Sixpar LEDs - RGB

Lighting Float Inventory:

This inventory is shared with both the Main Stage and the Black Box and is available on a first come first serve basis. If you need to reserve instruments from this inventory for your plot please let us know.

- 4 Altman 6X12
- 1 Altman 6x14
- 1 Altman 6X14 with iris
- 5 6" Fresnel – 500W
- 5 6" Baby Fresnel – 500W
- 5 Colortran Mini Zoom – 500W
- 9 Par can – various lamps available
- 3 3 cell strip lights
- 10 Barndoors

SHARED INVENTORY:

This inventory is shared with both the Main Stage and the Black Box and is available on a first come first serve basis. If you need to reserve items from this inventory for your load in or show, please let us know.

Scissor Lift Access (Main Stage Priority)

Aluminum Scaffolding - stored in outdoor storage unit

Ladders:

Ladders are stored in the Secret Room unless otherwise noted.

A-Frame

- 6' aluminum
- 8' aluminum
- 8' aluminum – painted black
- 8' wooden – painted black
- 10' wooden – stored in Black Box
- 14' Aluminum – stored in fenced outside storage

Extension

- 16' Aluminum
- 22' Fiberglass – stored in fenced outside storage

Power:

2 Extensions Cords 25' length

2 Power Strips

ADD ONS:

This inventory is shared with both the Main Stage and the Black Box and is available on a first come first serve basis. If you need to reserve items from this inventory for your show please let us know. 7 Stages will supply one 5' VGA or HDMI cable with rental, however, we do not provide any adaptors or source such as computer, iPad, etc...

5k Lumen Projector: \$250 a day/\$1000 a week*

Inputs:

- VGA
- HDMI
- DVI-I
- S-Video
- RCA Video

3k Lumen Projector: \$150 a day/\$500 a week*

Inputs:

- VGA
- S-Video
- RCA Video

NOT PROVIDED BY 7 STAGES:

Hand Tools

Power Tools

Hardware

Expendables

- Gaff Tape

- Spike Tape

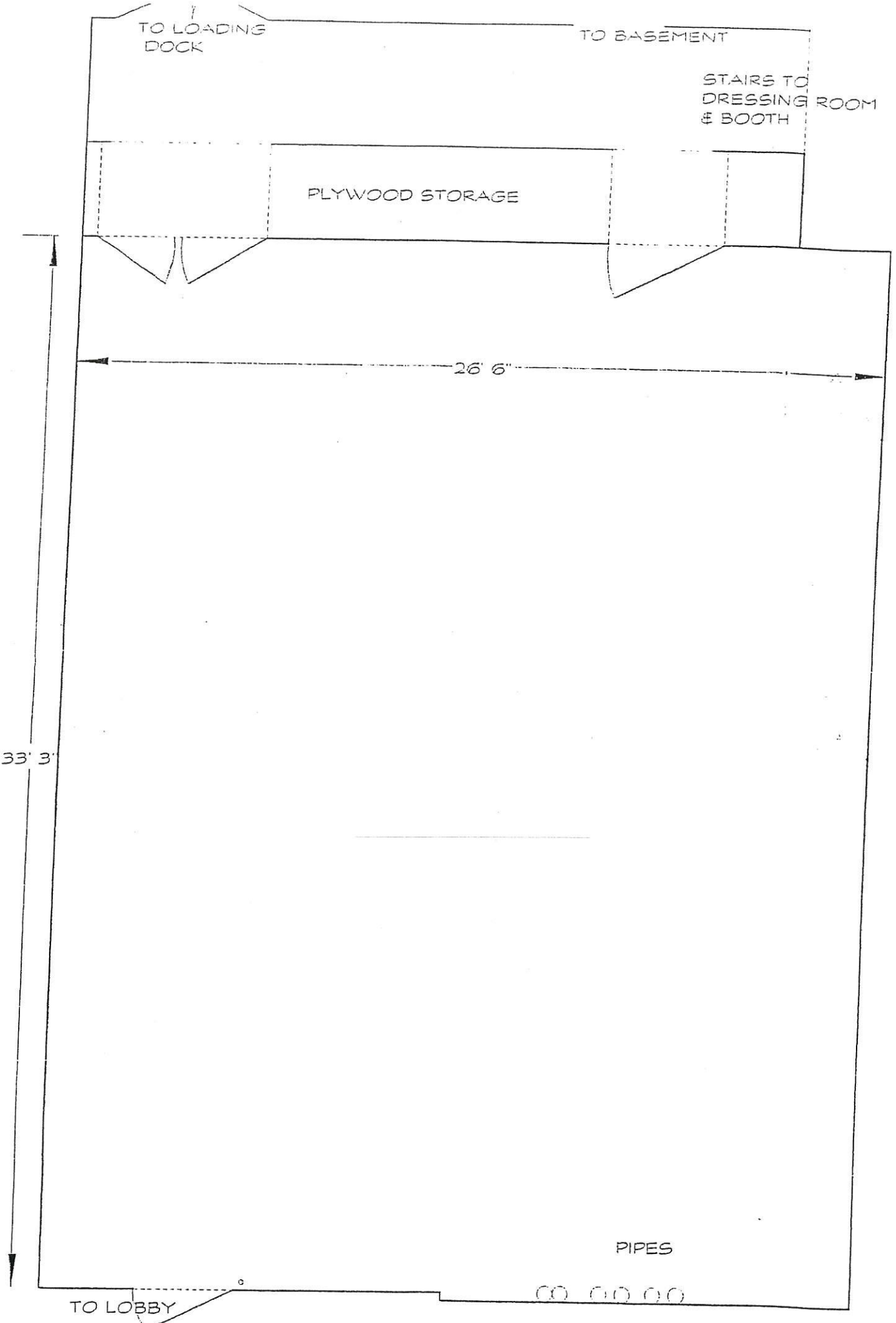
- Glow Tape

- Gel

- Tie Line

- Etc.

Laundry Detergent and softener



TO LOADING DOCK

TO BASEMENT

STAIRS TO DRESSING ROOM & BOOTH

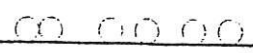
PLYWOOD STORAGE

26' 6"

33' 3"

PIPES

TO LOBBY



BOOTH

26' 6 1/2"

GRID HEIGHT IS 19'-4"

SEATING CAPACITY
APROX. 80
INCLUDING ROW ON
THE FLOOR

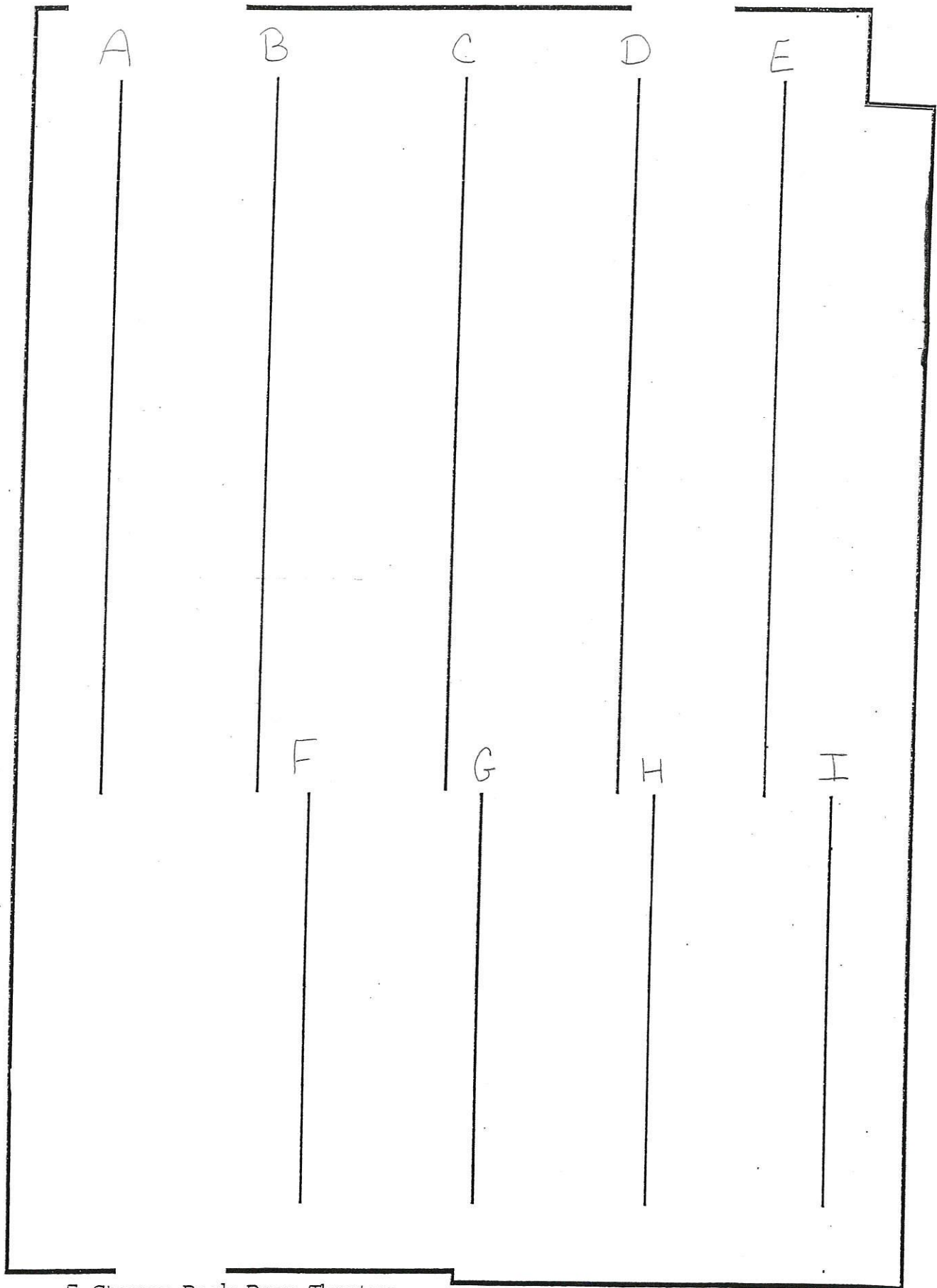
14' 6"
depth of stage

36' 3 1/2"

Seven Stages Back Door Theatre

LOBBY

scale 1/4" = 1'



7 Stages Back Door Theatre
Lighting Grid

scale 1/4" = 1'

Key

Elton SixPar

Collector Min.

- Channel

- Dimmer

- Power

- Relay

- Dimmer Rack

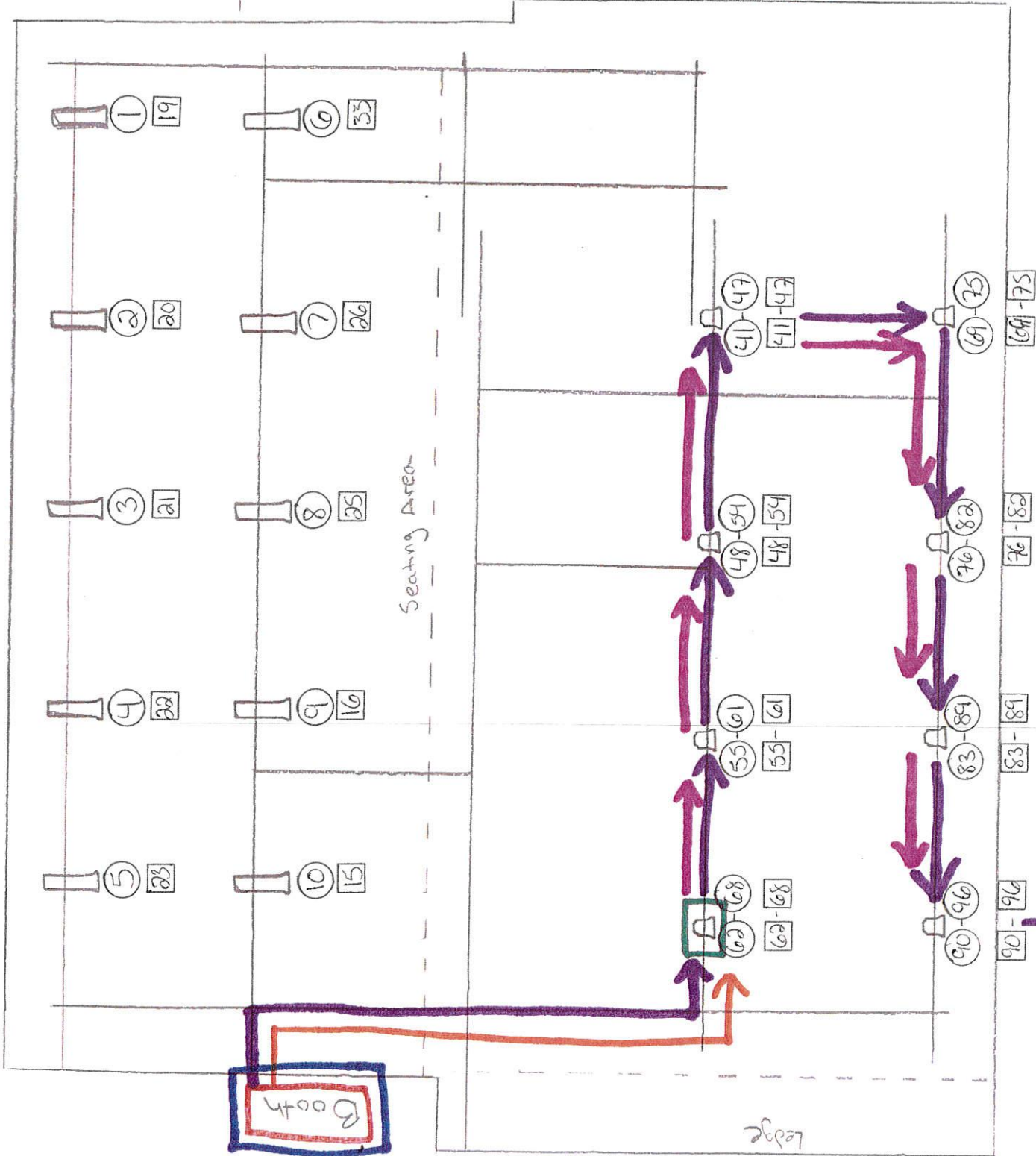
- Light Board

- DMX

- Power Con

- Edison

Lobby



*Not to Scale

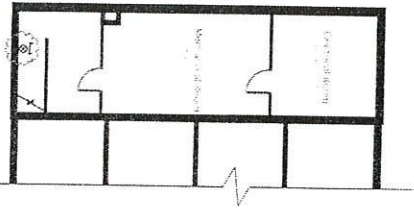
7 Stages Black Box Rep Channel Hook-up

Channel	Dimmer	Circuit	Instrument	Gels/Gobo	Purpose	Location
1	19	D1	Color Tran		DS front SR	Pipe I
2	20	D2	Color Tran		DS front CSR	Pipe E
3	21	D3	Color Tran		DS front C	Pipe E
4	22	D4	Color Tran		DS front CSL	Pipe E
5	23	D5	Color Tran		DS front SL	Pipe E
6	33	F3	Color Tran		US front SR	Pipe D
7	26	E2	Color Tran		US front CSR	Pipe D
8	25	E1	Color Tran		US front C	Pipe D
9	16	C4	Color Tran		US front CSL	Pipe D
10	15	C3	Color Tran		US front SL	Pipe H
41	41	LED	Six Par	Red	DSR	Pipe B
42	42	LED	Six Par	Green	DSR	Pipe B
43	43	LED	Six Par	Blue	DSR	Pipe B
44	44	LED	Six Par	White	DSR	Pipe B
45	45	LED	Six Par	Amber	DSR	Pipe B
46	46	LED	Six Par	UV	DSR	Pipe B
47	47	LED	Six Par	Dimmer	DSR	Pipe B
48	48	LED	Six Par	Red	DSRC	Pipe B
49	49	LED	Six Par	Green	DSRC	Pipe B
50	50	LED	Six Par	Blue	DSRC	Pipe B
51	51	LED	Six Par	White	DSRC	Pipe B
52	52	LED	Six Par	Amber	DSRC	Pipe B
53	53	LED	Six Par	UV	DSRC	Pipe B
54	54	LED	Six Par	Dimmer	DSRC	Pipe B
55	55	LED	Six Par	Red	DSL	Pipe B
56	56	LED	Six Par	Green	DSL	Pipe B
57	57	LED	Six Par	Blue	DSL	Pipe B
58	58	LED	Six Par	White	DSL	Pipe B
59	59	LED	Six Par	Amber	DSL	Pipe B
60	60	LED	Six Par	UV	DSL	Pipe B
61	61	LED	Six Par	Dimmer	DSL	Pipe B
62	62	LED	Six Par	Red	DSL	Pipe B
63	63	LED	Six Par	Green	DSL	Pipe B
64	64	LED	Six Par	Blue	DSL	Pipe B
65	65	LED	Six Par	White	DSL	Pipe B
66	66	LED	Six Par	Amber	DSL	Pipe B
67	67	LED	Six Par	UV	DSL	Pipe B

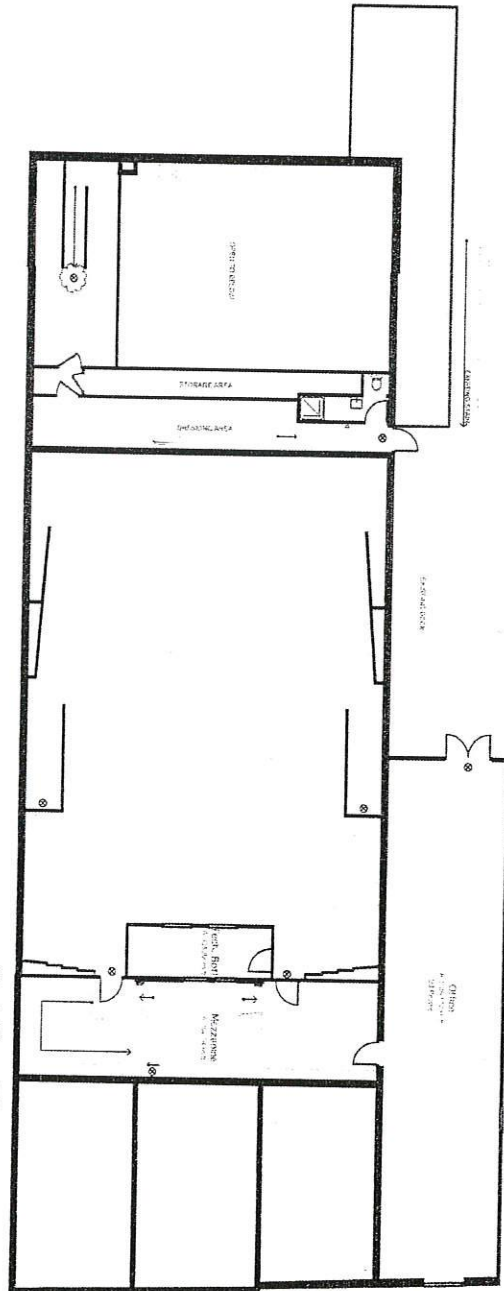
Black Box Dimmer/Circuit Hook-Up

Dimmer	Circuit
1	A1
2	A2
3	A3
4	A4
5	A5
6	A6
7	B1
8	B2
9	B3
10	B4
11	B5
12	B6
13	C1
14	C2
15	C3
16	C4
17	C5
18	C6
19	D1
20	D2
21	D3
22	D4
23	D5
24	D6
25	E1
26	E2
27	E3
28	E4
29	E5
30	E6
31	F1
32	F2
33	F3
34	F4
35	F5
36	F6
37	G1
38	G2
39	G3
40	G4

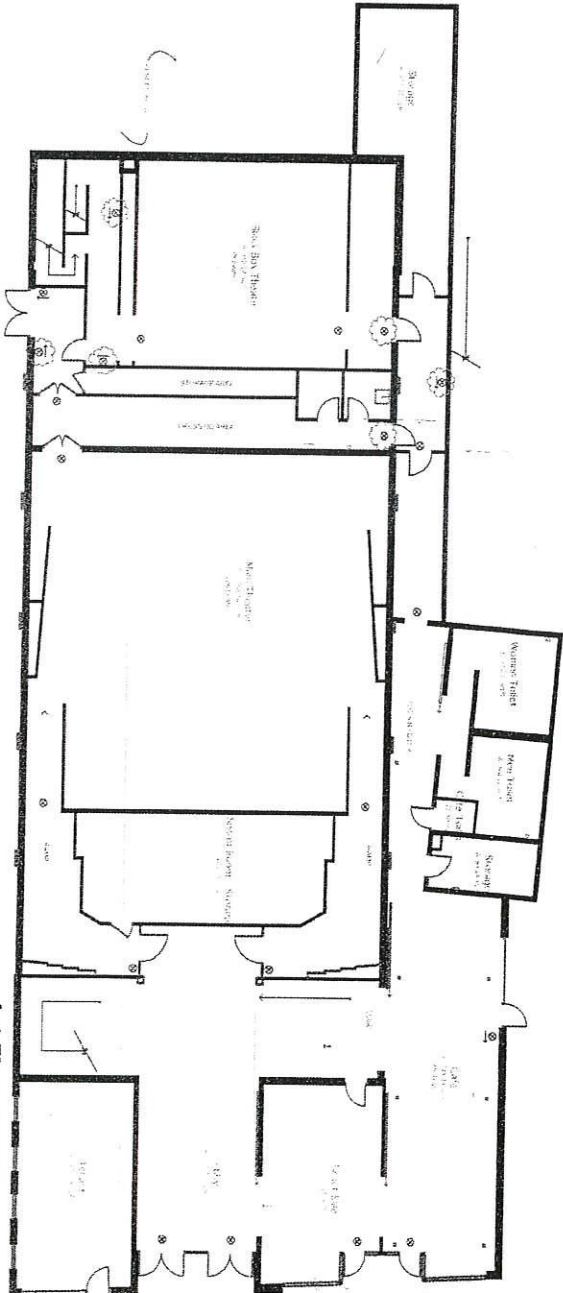
Basement Plan
Scale: 1/16" = 1'-0"



2nd Floor Plan
Scale: 1/16" = 1'-0"

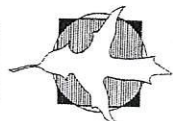


1st Floor Plan
Scale: 1/16" = 1'-0"



INTERIOR ALTERATIONS TO
7 STAGES
1105 EUCLID AVENUE ATLANTA GA 30307

ROBERT M. CAIN
ARCHITECT
1105 EUCLID AVENUE
ATLANTA, GEORGIA
(404) 522-8843
www.robertmcaingroup.com



8/29/12



A-01