

Main Stage Technical Specs

RATES:

Main Stage rental rates range from \$4,000-\$6,000 for the week, Monday through Sunday. Rates vary based on season, availability, non-profit status, and mission fit. Daily rentals can sometimes be arranged under special circumstances such as dark nights. Friday or Saturday daily rentals are extremely rare but are possible if the requested date is within 6 weeks of inquiry and the space is available.

STAGE:

46' 1" wide X 30' 4" deep oak sprung dance floor (with legs and cyc in place the performance space is about 30' x 30')

Fixed Grid Height is 19'-0", Grid Pipes are 10'-0" on center

House is a steep rake; 12' rise over a 35' run

Seating consists of 157 Fixed seats. Seats up to 200

SOFT GOODS:

Renter must discuss the proper handling of the soft goods with the Technical Director before attempting to adjust them. Renter will be charged for any damages incurred through improper handling. Soft goods can only be used with the permission of the Technical Director.

Legs:

Our rep plot uses eight black legs (18' x 8'), four on either side of the Mainstage, creating the only wing/offstage space. There are 6 movable tracks for the 3 downstage legs on either side, the two upstage legs are on hanging static pipes.

8 black legs (18' x 8') – standard rep plot legs

Additional Soft goods:

There are two tracks, one located upstage of the cyc lights for the cyc and one located down stage of the cyc lights for the scrim. These can only be moved with permission of the Technical Director.

1 blue cyc

1 black scrim

CLEAR-COM:

1 Clear-Com PL Pro PS 232 located in the booth, 3rd in amp rack

4 Head set & boxes

3 outputs located in the booth from rack (requires headset and box)

2 outputs on stage - 1 SL and 1 SR (requires headset and box)

1 squawk box located in the dressing room that can be used as a speaker or 1 headset (does not require box)

1 output located in the house in the 3rd row behind the center seat for use with the tech table

SOUND:

Sound Console:

1 Presonus 16 channel digital mixing console

1 QCS PLX 1804 Professional 1800 Watt Amplifier running right and left main speakers located in the booth, 1st in the amp rack

1 QCS PLX 1804 Professional 1800 Watt Amplifier running right and left monitors located in the booth, 2nd in the amp rack

1 Furman power supply w/mini lamps

1 16 channel snake from booth to SL (can be moved through the grid to relocate if needed)

2 Panasonic 400W Speakers

2 Fender Passive onstage monitors

Sound Float Inventory:

This inventory is shared with both the Main Stage and the Black Box and is available on a first come first serve basis. If you need to reserve items from this inventory for your sound design please let us know.

Mics:

2 SM 57

1 SM 58

Cables:

2 25' XLR cable

2 25' ¼" cable

Mic Stands:

2 straight mic stands

2 boom mic stands

2 straight table stands

LIGHTING:

Lighting inventory is constantly changing and availability is subject to approval. Contact the Technical Director for a current inventory. The Technical Director must approve all light plots and instrumentation. Lamps in the instruments expire from time to time. 7 Stages keeps a running inventory for the instruments in stock. If a lamp should expire, notify the Technical Director of the type needed and we will make available a replacement lamp.

All instruments must be hung from the existing grid and/or light trees. All hanging instruments must use a safety cable. Any floor-mounted instruments must have the cable taped to the floor with gaff tape or covered with carpet.

Gel is not provided by 7 Stages, it is the responsibility of the renter to provide gel and other expendables such as gaffer's tape, glow tape, tie line, and gobos.

Lighting Console:

ETC Element 2 40/500 Console

16 Scrimmer II 1.8k dimmers (dimmer per circuit)

32 Scrimmer II 2.4k digital dimmers (dimmer per circuit)

15 NSI 1.2K digital dimmers (for remaining re-patch circuits)

2 are dedicated to house lights

76 Stage Pin Circuits

Lighting Instruments:

LEDs:

- 15 Source 4Wrd 36 degree – LED Warm White only
- 6 Color Source 4 36 degree – LED RGB
- 30 Color Source PAR – LED RGB
- 7 Color Source CYC – LED RGB

Conventional:

- 20 Source 4 bodies – 575W
- Barrels (25 total)
 - 4 – 19 degree
 - 12 – 26 degree
 - 6 – 36 degree
 - 4 – 50 degree
- 6 6" Fresnel – 500W
- 10 Colortran Mini Zooms - 500W

Light Trees:

Boom Bases: 6

Boom Pipes: 6 ranging in height from 8'-6" – 12'-0"

Lighting Float Inventory:

This inventory is shared with both the Main Stage and the Black Box and is available on a first come first serve basis. If you need to reserve instruments from this inventory for your plot please let us know.

- 4 Altman 6X12
- 1 Altman 6x14
- 1 Altman 6X14 with iris
- 5 6" Fresnel – 500W
- 5 6" Baby Fresnel – 500W
- 5 Colortran Mini Zoom – 500W
- 9 Par can – various lamps available
- 3 3 cell strip lights
- 10 Barndoors

SHARED INVENTORY:

This inventory is shared with both the Main Stage and the Black Box and is available on a first come first serve basis. If you need to reserve items from this inventory for your load in or show, please let us know.

Scissor Lift Access (Main Stage Priority)

Aluminum Scaffolding - stored in outdoor storage unit

Ladders:

Ladders are stored in the Secret Room unless otherwise noted.

A-Frame

6' aluminum

8' aluminum

8' aluminum – painted black

8' wooden – painted black

10' wooden – stored in Black Box

14' Aluminum – stored in fenced outside storage

Extension

16' Aluminum

22' Fiberglass – stored in fenced outside storage

Power:

2 Extensions Cords 25' length

2 Power Strips

ADD ONS:

This inventory is shared with both the Main Stage and the Black Box and is available on a first come first serve basis. If you need to reserve items from this inventory for your show please let us know. 7 Stages will supply one 5' VGA or HDMI cable with rental, however, we do not provide any adaptors or source such as computer, iPad, etc...

5k Lumen Projector: \$250 a day/\$1000 a week*

Inputs:

VGA

HDMI

DVI-I

S-Video

RCA Video

3k Lumen Projector: \$150 a day/\$500 a week*

Inputs:

VGA

S-Video

RCA Video

NOT PROVIDED BY 7 STAGES:

Hand Tools

Power Tools

Hardware

Expendables

Gaff Tape

Spike Tape

Glow Tape

Gel

Tie Line

Etc.

Laundry Detergent and softener

7 Stages Mainstage Seating Chart

| | | | | | | | | | | | | | | | | | | | | | | | | | | | | | | | | | | | | | | | | | | | | | | | | | | | | |
|-------|---------|---|---|---|---|--|---|--|----|----------------------------|-------|--|--|---|--|--|----|--|--|----|--|--|----|--|----|----|----|--|----|--|---|----|--|--|---------|--|--|----------------------------|----|--|----|----|----|--|----|--|----|---|----|--|---|--|
| STAGE | | | | | | | | | | | | | | | | | | | | | | | | | | | | | | | | | | | | | | | | | | | | | | | | | | | | |
| A | 4 | | | 5 | | | 6 | | | S T A I R S | 7 | | | 8 | | | 9 | | | 10 | | | 11 | | | 12 | | | 13 | | | 14 | | | 15 | | | S T A I R S | 16 | | | 17 | | | 18 | | | A | | | | |
| B | 4 | | | 5 | | | 6 | | | | 7 | | | 8 | | | 9 | | | 10 | | | 11 | | | 12 | | | 13 | | | 14 | | | 15 | | | | 16 | | | 17 | | | 18 | | | B | | | | |
| C | 4 | | | 5 | | | 6 | | | | 7 | | | 8 | | | 9 | | | 10 | | | 11 | | | 12 | | | 13 | | | 14 | | | 15 | | | | 16 | | | 17 | | | 18 | | | C | | | | |
| D | 4 | | | 5 | | | 6 | | | | 7 | | | 8 | | | 9 | | | 10 | | | 11 | | | 12 | | | 13 | | | 14 | | | 15 | | | | 16 | | | 17 | | | 18 | | | D | | | | |
| E | 4 | | | 5 | | | 6 | | | | 7 | | | 8 | | | 9 | | | 10 | | | 11 | | | 12 | | | 13 | | | 14 | | | 15 | | | | 16 | | | 17 | | | 18 | | | E | | | | |
| F | Railing | | | | | | 7 | | | | 8 | | | 9 | | | 10 | | | 11 | | | 12 | | | 13 | | | 14 | | | 15 | | | Railing | | | | | | F | | | | | | | | | | | |
| G | | | 3 | | 4 | | 5 | | 6 | | 7 | | | 8 | | | 9 | | | 10 | | | 11 | | | 12 | | | 13 | | | 14 | | | 15 | | | | 16 | | 17 | | 18 | | 19 | | G | | | | | |
| H | 1 | 2 | 3 | | 4 | | 5 | | 6 | | 7 | | | 8 | | | 9 | | | 10 | | | 11 | | | 12 | | | 13 | | | 14 | | | 15 | | | | 16 | | 17 | | 18 | | 19 | | 20 | | 21 | | H | |
| I | 1 | 2 | 3 | | 4 | | 5 | | 6 | | 7 | | | 8 | | | 9 | | | 10 | | | 11 | | | 12 | | | 13 | | | 14 | | | 15 | | | | 16 | | 17 | | 18 | | 19 | | 20 | | 21 | | I | |
| J | 1 | 2 | 3 | | 4 | | 5 | | 6 | | 7 | | | 8 | | | 9 | | | 10 | | | 11 | | | 12 | | | 13 | | | 14 | | | 15 | | | | 16 | | 17 | | 18 | | 19 | | 20 | | 21 | | J | |
| K | | | 3 | | 4 | | 5 | | 6 | | BOOTH | | | | | | | | | | | | 18 | | 19 | | 20 | | 21 | | K | | | | | | | | | | | | | | | | | | | | | |
| L | | | 4 | | 5 | | 6 | | 18 | | | | | | | | | | | | | | 19 | | 20 | | 21 | | L | | | | | | | | | | | | | | | | | | | | | | | |

146 Fixed Seats

33 Folding Chairs

Green sections are Folding Chairs

179 Total Capacity

The Seat Numbers and Row Letters listed do not exist in the theatre. They are only listed for reference in this document.

Most events are General Admission.

Row A is on stage level and is the accessible seating.

Rows K and L are close to the same level making sight lines for

Row L slightly obstructed view.

If projections are needed Row J Seats 10, 11, and 12 should not be used to avoid shadows.

DRESSING ROOM

RESTROOM

7 Stages Performing Arts Center

TO
DRESSING
ROOM

TO
DRESSING
ROOM

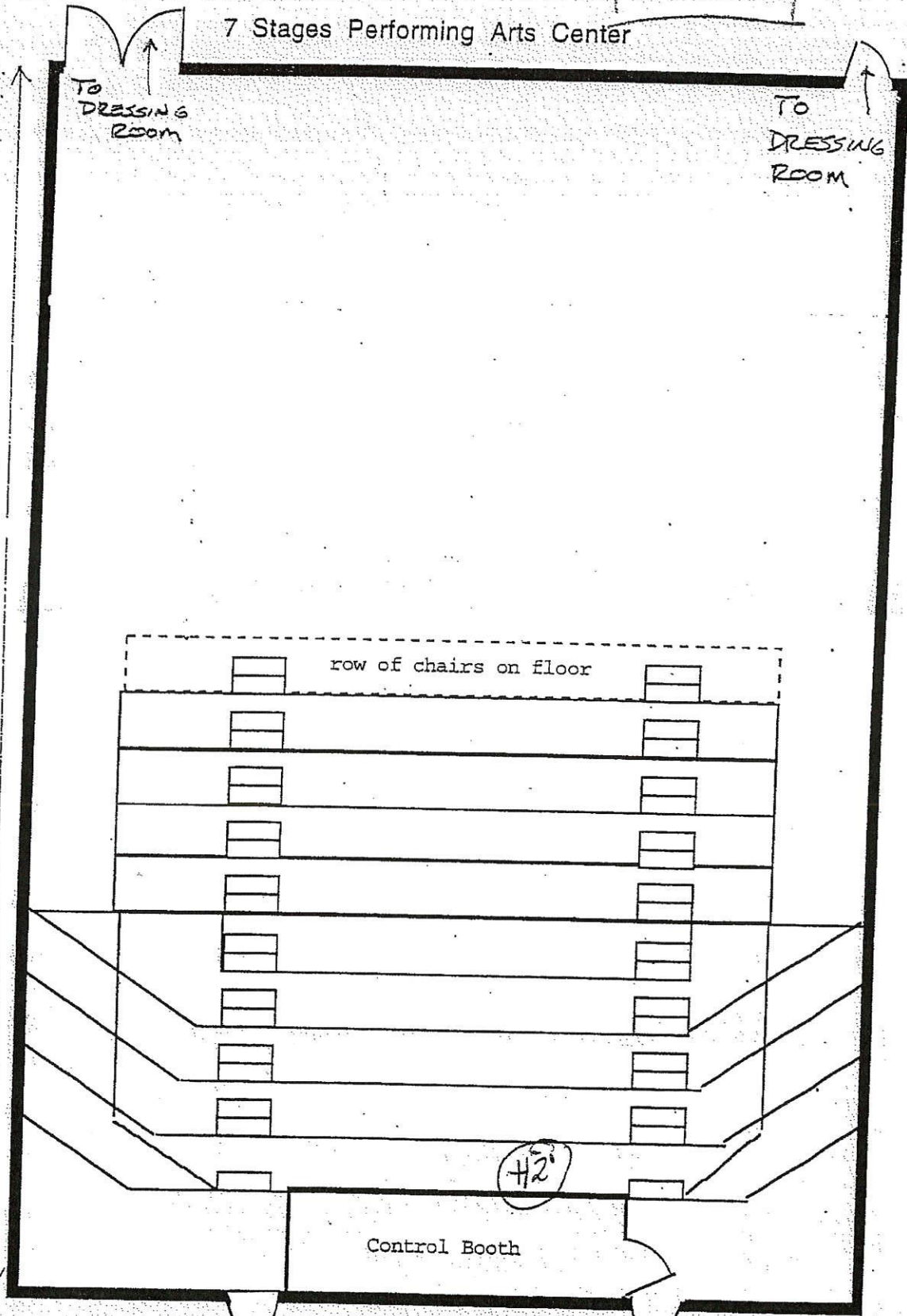
67'-2"

row of chairs on floor

42'

Control Booth

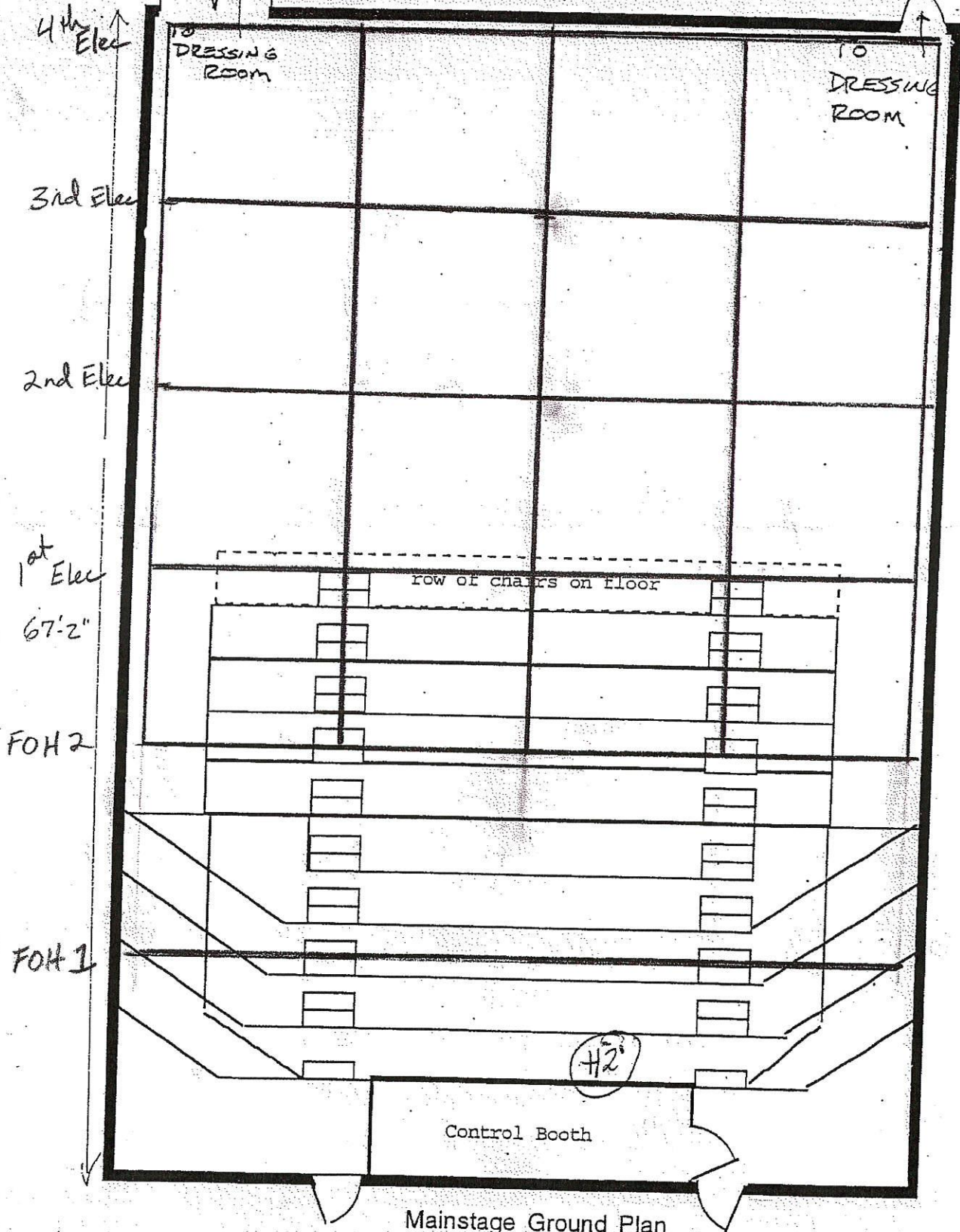
Mainstage Ground Plan
scale 1/8" = 1' - 0"
rev. 4/15/97



DRESSING ROOM

RESTROOM

7 Stages Performing Arts Center

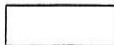


Mainstage Ground Plan
scale 1/8" = 1' - 0"
rev. 4/15/97

| | | | | |
|---|--------|--------|--------|---|
| 35, 36 4 TH ELECTRIC | | 33, 34 | | 31, 32 |
| WALL POCKET AT STAGE LEVEL 41-44, 75, 76 | | | | WALL POCKET AT STAGE LEVEL 37-40, 73, 74 |
| 71, 72 | 29, 30 | 69, 70 | 27, 28 | 67, 68 |
| 3 RD ELECTRIC | | | | |
| | | | | |
| | | | | |
| 25, 26 | 65, 66 | 23, 24 | 63, 64 | 21, 22 |
| 2 ND ELECTRIC | | | | |
| | | | | |
| | | | | |
| 61, 62 | 19, 20 | 59, 60 | 17, 18 | 57, 58 |
| 1 ST ELECTRIC | | | | |
| | | | | |
| FOH 2 15, 16 | 55, 56 | 13, 14 | 53, 54 | 11, 12 |

HOUSE BEGINS
STEEP RAKE AT
1ST ELECTRIC

-CIRCUITS 1-44 ARE HARDWIRED 1 TO 1 WITH THE EXCEPTION
OF WALL POCKETS 38, 39, 42, AND 43 ALSO REPEATING IN THE
PATCH BAY
-CIRCUITS 47 AND 48 ARE HARDWIRED HOUSE LIGHTS
-DIMMERS 45, 46 AND 49-64 AVAILABLE FOR PATCH
-TWO 4 CHANNEL MULTI-CABLES RUN FROM FOH 1 TO STAGE



FOH 1
49, 50, 1, 2

3, 4

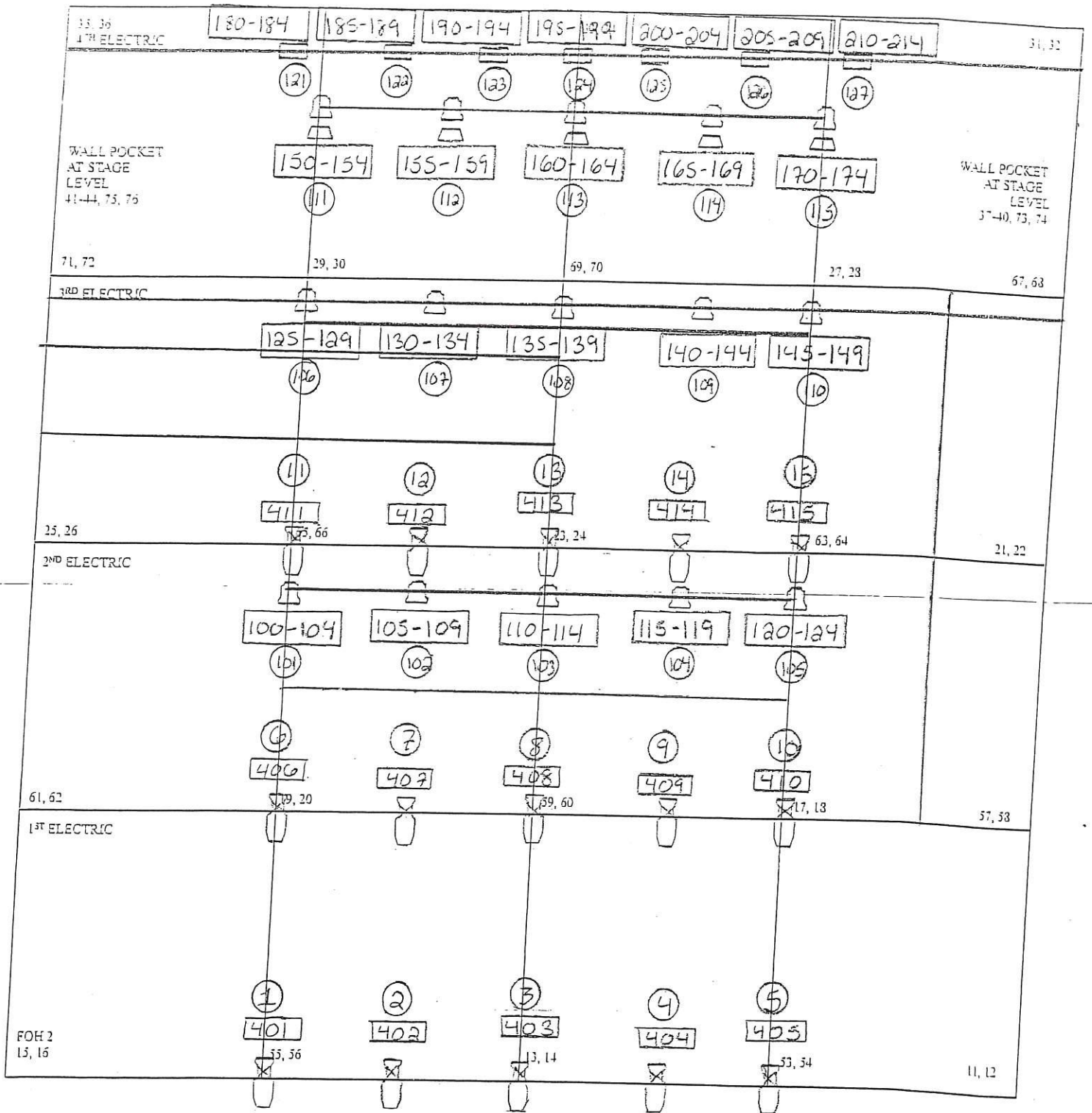
5, 6

7, 8

9, 10, 51, 52

CONTROL BOOTH

GRID IS ON 10' CENTERS



HOUSE BEGINS
STEEP RAKE AT
1ST ELECTRIC

CIRCUITS 1-11 ARE HARDWIRED TO 1 WITH THE EXCEPTION
OF WALL POCKETS 38, 39, 42, AND 43 ALSO REPEATING IN THE
PATCH BAY
-CIRCUITS 47 AND 48 ARE HARDWIRED HOUSE LIGHTS
-DIMMERS 45, 46 AND 49-54 AVAILABLE FOR PATCH
-TWO 4 CHANNEL MULTI-CABLES RUN FROM FOH 1 TO STAGE

Key

- 36° ETC Source 4 wrd w/R99 + R119
- ETC Color Source Per MR
- Barn door
- ETC Color Source Cyc
- Channel Address

FOH 1
10 50 1 2

3 4

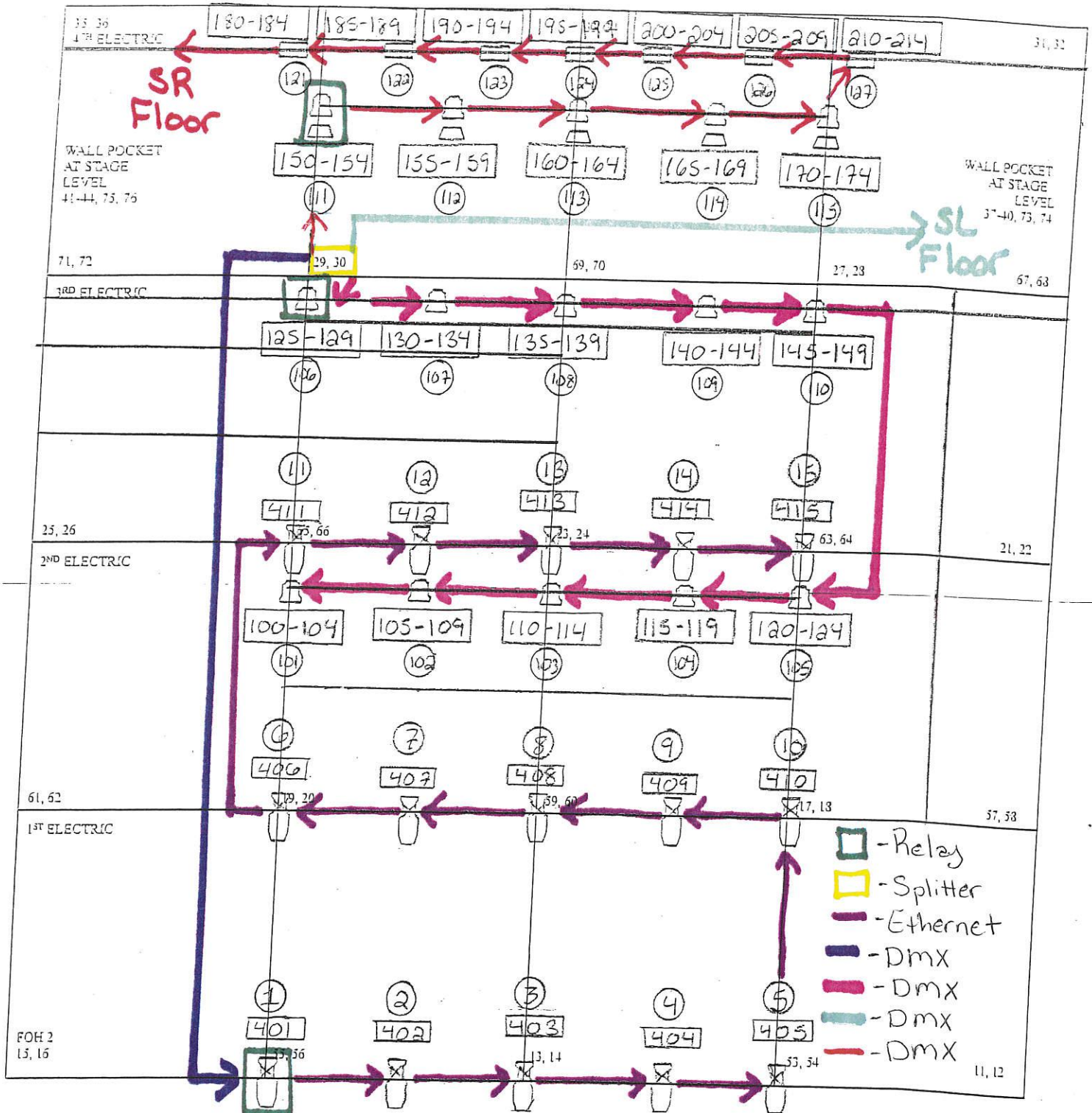
5 6

7 8

9 10 51 52

CONTROL BOOTH

CONTROL BOOTH



- Relay
- Splitter
- Ethernet
- DMX
- DMX
- DMX
- DMX

Key

- X 36° ETC Source 4 w/rd w/R99 + R119
- U ETC Color Source Per MR
- Barn door
- ETC Color Source Cyc
- Channel □ Address

-CIRCUITS 1-11 ARE HARDWIRED 1 TO 1 WITH THE EXCEPTION OF WALL POCKETS 33, 39, 42, AND 43 ALSO REPEATING IN THE PATCH BAY
 -CIRCUITS 47 AND 48 ARE HARDWIRED HOUSE LIGHTS
 -DIMMERS 45, 46 AND 49-64 AVAILABLE FOR PATCH
 -TWO 4 CHANNEL MULTI-CABLES RUN FROM FOH 1 TO STAGE

HOUSE BEGINS STEEP RAKE AT 1ST ELECTRIC

FOH 1
10, 50, 1, 2

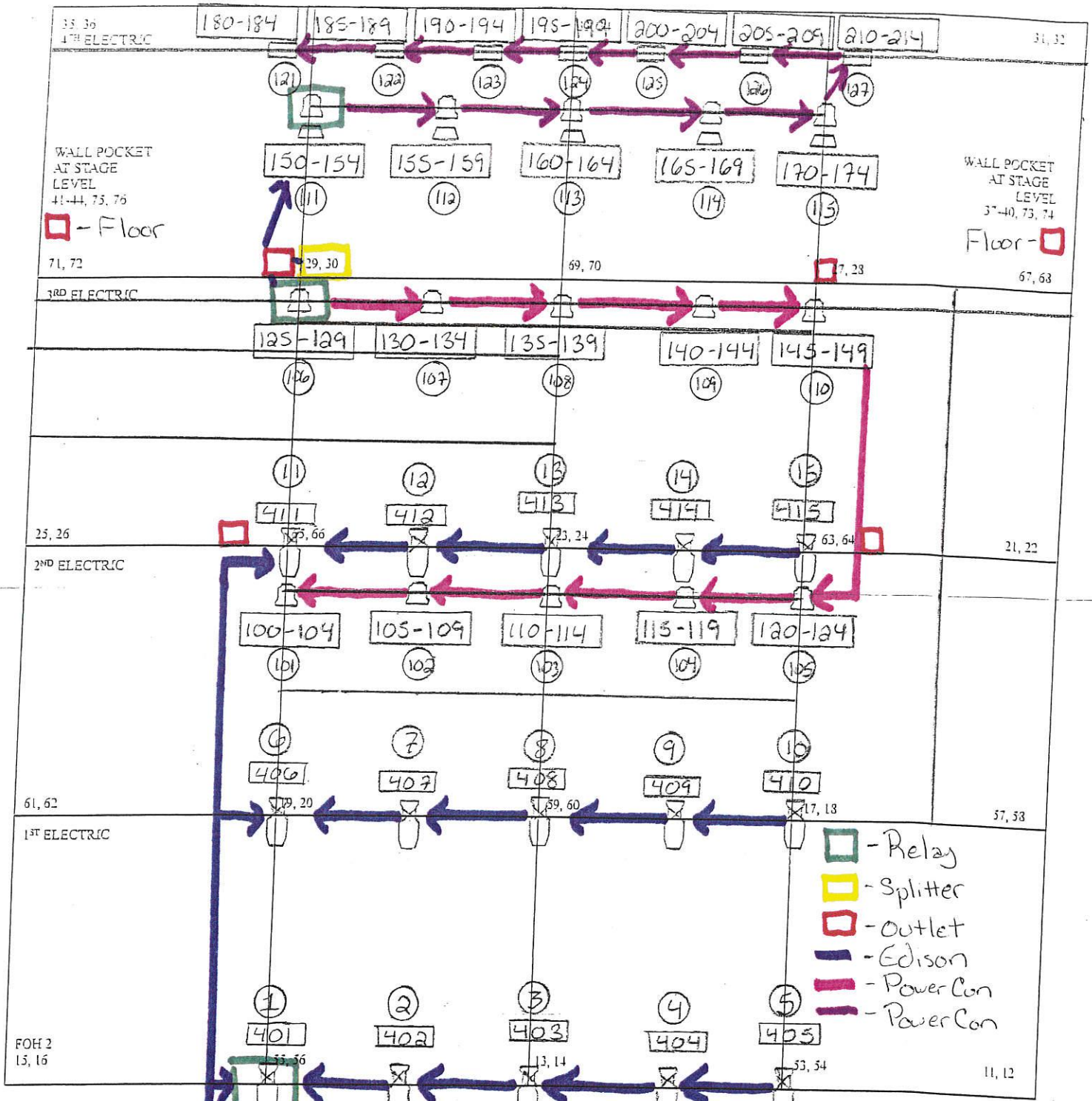
7, 4

5, 5

7, 3

9, 10, 51, 52

CONTROL ROOM



Key

- 36° ETC Source 4 w/rd w/R99 + R119
- ETC Color Source Par MR
- Barndoor
- ETC Color Source Cyc
- Channel
- Address

CIRCUITS 1-11 ARE HARDWIRED 1 TO 1 WITH THE EXCEPTION OF WALL POCKETS 38, 39, 42, AND 43 ALSO REPEATING IN THE PATCH BAY
 -CIRCUITS 47 AND 48 ARE HARDWIRED HOUSE LIGHTS
 -DIMMERS 45, 46 AND 49-64 AVAILABLE FOR PATCH
 -TWO 4 CHANNEL MULTI-CABLES RUN FROM FOH 1 TO STAGE

HOUSE BEGINS STEEP RAKE AT 1ST ELECTRIC

FOH 1
19, 20, 17

-Booth
CONTROL BOOTH

GRIDS ON WALL CENTER

7 Stages Main Stage Rep Channel Hook-up

| Channel | Dimmer | Circuit | Instrument | Gels/Gobo | Purpose | Location |
|---------|---------|---------|------------|--------------|--------------|-------------------|
| 1 | 401 | LED | S4 LED 36' | R99 & R119 | DS front SR | FOH 2 |
| 2 | 402 | LED | S4 LED 36' | R99 & R119 | DS front CSR | FOH 2 |
| 3 | 403 | LED | S4 LED 36' | R99 & R119 | DS front C | FOH 2 |
| 4 | 404 | LED | S4 LED 36' | R99 & R119 | DS front CSL | FOH 2 |
| 5 | 405 | LED | S4 LED 36' | R99 & R119 | DS front SL | FOH 2 |
| 6 | 406 | LED | S4 LED 36' | R99 & R119 | MS front SR | 1 st E |
| 7 | 407 | LED | S4 LED 36' | R99 & R119 | MS front CSR | 1 st E |
| 8 | 408 | LED | S4 LED 36' | R99 & R119 | MS front C | 1 st E |
| 9 | 409 | LED | S4 LED 36' | R99 & R119 | MS front CSL | 1 st E |
| 10 | 410 | LED | S4 LED 36' | R99 & R119 | MS front SL | 1 st E |
| 11 | 411 | LED | S4 LED 36' | R99 & R119 | US front SR | 2 nd E |
| 12 | 412 | LED | S4 LED 36' | R99 & R119 | US front CSR | 2 nd E |
| 13 | 413 | LED | S4 LED 36' | R99 & R119 | US front C | 2 nd E |
| 14 | 414 | LED | S4 LED 36' | R99 & R119 | US front CSL | 2 nd E |
| 15 | 415 | LED | S4 LED 36' | R99 & R119 | US front SL | 2 nd E |
| | | | | | | |
| 99 | 47 & 48 | 47 & 48 | House | | House Lights | FOH |
| | | | | | | |
| 101 | 100-104 | LED | CS Par | Medium Round | DS Top SR | 1.5 E |
| 102 | 105-109 | LED | CS Par | Medium Round | DS Top CSR | 1.5 E |
| 103 | 110-114 | LED | CS Par | Medium Round | DS Top CS | 1.5 E |
| 104 | 115-119 | LED | CS Par | Medium Round | DS Top CSL | 1.5 E |
| 105 | 120-124 | LED | CS Par | Medium Round | DS Top SL | 1.5 E |
| 106 | 125-129 | LED | CS Par | Medium Round | MS Top SR | 2.5 E |
| 107 | 130-134 | LED | CS Par | Medium Round | DS Top CSR | 2.5 E |
| 108 | 135-139 | LED | CS Par | Medium Round | DS Top CS | 2.5 E |
| 109 | 140-144 | LED | CS Par | Medium Round | DS Top CSL | 2.5 E |
| 110 | 145-149 | LED | CS Par | Medium Round | DS Top SL | 2.5 E |
| 111 | 150-154 | LED | CS Par | Medium Round | US Top SR | 3.5 E |
| 112 | 155-159 | LED | CS Par | Medium Round | US Top CSR | 3.5 E |
| 113 | 160-164 | LED | CS Par | Medium Round | US Top CS | 3.5 E |
| 114 | 165-169 | LED | CS Par | Medium Round | US Top CSL | 3.5 E |
| 115 | 170-174 | LED | CS Par | Medium Round | US Top SL | 3.5 E |
| | | | | | | |
| 121 | 180-184 | LED | CS Cyc | | Cyc SR | Cyc |
| 122 | 185-189 | LED | CS Cyc | | Cyc MSR | Cyc |
| 123 | 190-194 | LED | CS Cyc | | Cyc CSR | Cyc |
| 124 | 195-199 | LED | CS Cyc | | Cyc C | Cyc |
| 125 | 200-204 | LED | CS Cyc | | Cyc CSL | Cyc |
| 126 | 205-209 | LED | CS Cyc | | Cyc MSL | Cyc |
| 127 | 210-214 | LED | CS Cyc | | Cyc SL | Cyc |

